



News from SECI

Spring/Summer 2025



Greetings from [Strategies for Equity and Communication Impact \(SECI\)](#)! We hope this newsletter finds you well at these complex times for our collective work in global health, health equity, and health and risk communication.

We invite you to stay informed and engaged with SECI's biannual update, bringing you recent developments, opportunities, and resources we hope will help you advance our shared mission and e. We encourage you to share this newsletter with colleagues who embrace our vision—they can join our community by registering [here](#).

For more information about the people behind our work, explore our [team profiles](#) on our website.

We value your input and always look forward to starting new conversations! Whether you're interested in collaborating or simply want to connect or learn about our recent work, please [reach out](#) — your engagement strengthens our community and efforts! Stay well and Happy Spring/Summer!

*A few spots are still available in AUR Health
and Risk Communication International*

Elevate your expertise in health and risk communication! Join this Global Health Communication Institute in Rome, Italy, in July 2025.

*A Global Health Communication Institute
Rome, Italy, July 7-18, 2025*

HEALTH AND RISK COMMUNICATION IN PANDEMICS AND BEYOND

STRATEGIES FOR A SYSTEMS THINKING,
COMMUNITY-CENTERED, AND EQUITY-
DRIVEN APPROACH

Join us for a Summer Professional Development Program at
The American University of Rome in July 2025.

In association with Strategies for Equity and
Communication Impact (SECI) and the peer-
reviewed *Journal of Communication in
Healthcare: Strategies, Media, and
Engagement in Global Health*.

Faculty (guest lectures and site visits)
include leading international and Italian
organizations and experts.

For additional information visit
<https://aur.edu/sbcc>
or scan the QR code

*In response to numerous requests, registration
deadline extended to **June 20, 2025!***



**Registration deadline extended to
June 20, 2025!**

When: July 7-18, 2025

Where: Rome, Italy

Audience: Practitioners, academics,
and leaders from the fields of public
health, communication, global health,
healthcare, medicine, human rights,
community development,
international development and other
related disciplines

Led by SECI's Principal, Prof. Renata Schiavo, this intensive 10-day international professional development program being offered for the second year by The American University of Rome (AUR) will equip you with advanced strategies to help navigate the complex landscape of health and risk communication in a post-pandemic world.

The curriculum focuses on:

- System-thinking and community-centered approaches
- Social and behavior change (SBC) and communication (SBCC)
- Health equity and human rights
- Participatory and multisectoral health and risk communication strategies

Featuring guest lectures and site visits with leading organizations like UNICEF, Doctors Without Borders, National Institute for Health Migration and Poverty (NIHMP), and WHO Regional Office for Europe, among others, the summer institute is offered in association with SECI and the peer-reviewed Journal of Communication in Healthcare: Strategies, Media, and Engagement in Global Health.

participants say.

Upcoming Talks and Opportunities to Connect



Connect with SECI's Principal, **Dr. Renata Schiavo**, at these upcoming events where she will be speaking!

Tuesday, May 20, 2025

Columbia University Children's Health
*Health in the Era of Social Media -
What Physicians and Parents can do to
Navigate this Moment in Time*

[Role: Webinar Panelist]

Wednesday, June 4, 2025

Academy of Professionalism in Health
Care, North Chicago, Illinois
Trust Building in Different Contexts

[Role: Symposium Chair]

Wednesday, June 25, 2025

The British Academy, University of Essex, and Kenyatta University
*Increasing Publications from the Global South: A Look at Strategies and Potential
Topics* [Role: Online Workshop Speaker]

SECI Article Picks

Study examines the impact of historical redlining on present-day transportation noise disparities in the United States.

Through analysis of Home Owners' Loan Corporation (HOLC) maps, fine-scale transportation noise estimates, and sociodemographic data, the researchers of the study "[Race, historical redlining,](#)

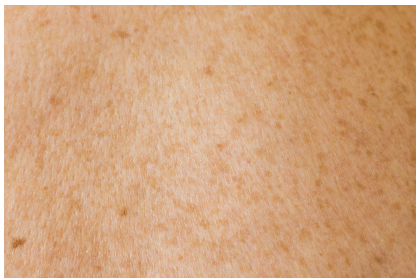


Exposure Science & Environmental Epidemiology made the following findings.

- Residents of historically redlined (lowest-graded) neighborhoods experience significantly higher transportation noise levels (17.4 dBA or 3x loudness) compared to those in the highest-graded neighborhoods.
- People of color experience approximately 7 dBA greater (2x louder) excess transportation noise exposure than White people nationwide.
- Racial/ethnic noise exposure disparities persist within each HOLC grade, suggesting that historical redlining is one of several discriminatory practices contributing to noise pollution injustices.

Why this is important: The study highlights the lasting impact of discriminatory housing practices on environmental health outcomes, revealing that historical redlining and broader racial inequalities contribute to present-day noise pollution disparities across the US. The findings emphasize the need for policy interventions to address these disparities and to promote environmental justice.

Study examines the underrepresentation of dark skin tones in online image search results for skin cancer, highlighting a potential source of racial bias in health information.



Through analysis of online image search results, the researchers of the study “[Searching for equity: White normativity in online skin cancer images](#)” published in *Social Science & Medicine* found that skin cancer images online overwhelmingly feature light skin tones. Examining 1600 Google image search results for terms related to skin cancer, the researchers coded the skin tones using the Fitzpatrick scale. They found that approximately 96% of the images depicted light skin tones (Fitzpatrick scale 1-3), while only about 4% showed dark skin tones (Fitzpatrick scale 4-6).

searches for health information can reflect and reinforce racial biases, in this case, as related to the visual representation of skin cancer. This lack of representation of skin cancer on darker skin tones can perpetuate medical myths of Black invulnerability to skin cancer and may undermine public health efforts to promote equitable prevention and early detection across diverse populations. It also raises concerns about how biases in online search algorithms might exacerbate barriers to care for individuals from medically underserved and/or minoritized racial groups who often turn to the internet for initial health information.

About Strategies for Equity and Communication Impact (SECI)

Established in 2004, Strategies for Equity and Communication Impact (SECI) (formerly Strategic Communication Resources) is a women-owned global consultancy focusing on health, equity, and human rights issues. We help organizations achieve their mission by promoting behavioral, social, and organizational change via social innovation, community engagement and systems-changing strategies. For additional information, visit <https://www.seci-globalconsulting.com/>.

Stay in Touch!



Visit Strategies for Equity and Communication Impact (SECI)
website

Copyright © 2025 Strategies for Equity and Communication Impact, All rights reserved.

<https://www.seci-globalconsulting.com/>

<https://www.renataschiavo.com/>

New York, NY 10014 - United States

Want to change how you receive these emails?

You can [update your preferences](#) or [unsubscribe](#)